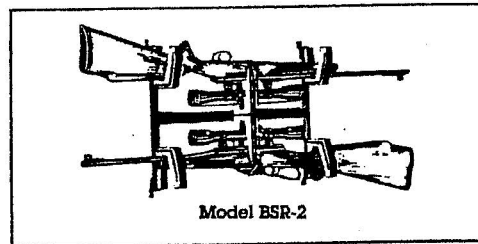
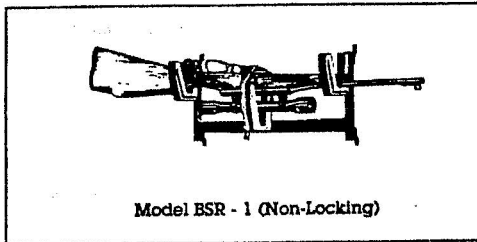




MOUNTING INSTRUCTIONS

Models BSR-1, BSR-2



Drill Sizes: 1/8" drill bit (double metal walls & ceilings)
or
11/64" drill bit (single metal walls & ceilings)

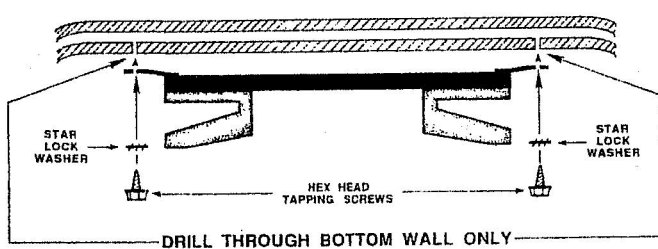
Furnished: mounting screws & bolts

To mount racks:

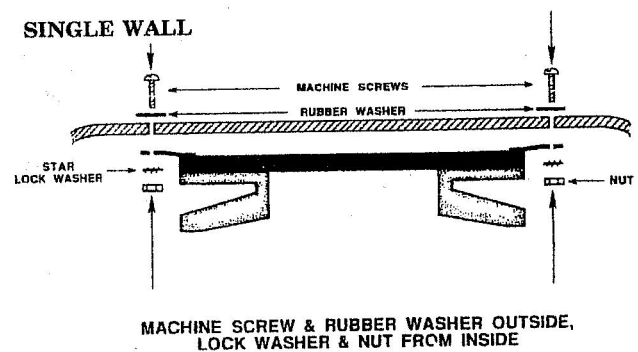
- A helper will make the job easier.
- Strap gun(s) snugly in rack, if gun stock and/or hand guard is too tight or loose bend end holders and center area to accommodate, establish desired mounting location; mark the four screw or bolt locations.
- Drill holes, remove gun(s) from rack and mount.

Mounting tabs may be bent to be flush with mounting surface.

DOUBLE WALL



SINGLE WALL



•• On vehicles with **double metal ceilings & walls, drill the 1/8" holes through the first wall only.** Mount rack with the tapping screws provided.

•• On vehicles with **single wall or fiberglass, drill the 11/64" holes through wall or roof.** Mount with the waterproof machine screws, washers and nuts provided.

CAUTION: All guns should be handled as loaded.